

CAMP BEECH CLIFF ECHOES

2014 Fall Newsletter



If We Tell Them It's Good for Them, They Won't Like It As Much!

We had over 700 happy campers in our traditional summer camp and 24 themed specialty camps this summer. If asked, these campers would tell you about their favorite counselor and their new best friend forever. They might tell you what activity they liked most: swimming, archery, art, pottery, sailing, rock climbing, high ropes or nature exploring. If you're a camper parent, you've heard the silly camp songs (and sung along in the car), found the perfect tutu for that Fracky Friday costume, know the real value of those camper bucks, and wiped sticky s'mores off of blessedly tired faces.

Those campers think that they were just having fun but we know that the transformational benefits of camp last long after the summer season is over. Camp Beech Cliff is a place where kids can safely step out of their comfort zone and try something new. Camp benefits children by helping them to develop independence; strengthen social, team-building and leadership skills; and increase appreciation of our natural world. Yes, summer camp is fun but our happy campers leave camp with more than just lasting friendships, memories, and a smile. They leave with life skills that will move them forward to success, whether they know it or not. Shh!



Rock On MDI! Specialty campers.

LEADERSHIP

Board of Trustees

Jim Progin, Chair
Mary McCall, Vice Chair
Donald Graves, 2nd Vice Chair
Ben Ketchen, Secretary
Gail Amalia B. Katz
John Macauley, PhD
Margaret Morton
Elizabeth Uhlman

Board of Directors

Patty Selig, Chair
Megan Smith, Vice Chair
Ben Ketchen, 2nd Vice Chair
Kerri Russell, Secretary

Liz Angelbeck	Michael McKernan
Owen Craighead	Vince Messer, PhD
Kristen Goodwin	Eileen Miller
Donald Graves	Elizabeth Salvi
Ron Greenberg	Joy O'Shaughnessy
Marie Griffith, PhD	Faith Pulis
Thomas Hodge	Sally Kellogg, Honorary
Gail Amalia B. Katz	Lee Patterson, Honorary
John Macauley, PhD	

Senior Staff

Debra Deal, President/Executive Director
Sylvie Piquet, Camp Director
John Brown, Director of Finance
Michele Marks, Director of Development
Sarah Catanese, Director of Programs & Operations
Jim Daigle, Director of Buildings and Grounds
John Izenour, Office Manager

Contact

Camp Beech Cliff
PO Box 381, 264 Beech Hill Road
Mount Desert, ME 04660-0381
Phone: 207-244-0365, Fax: 207-244-3355
info@campbeechcliff.org, www.campbeechcliff.org

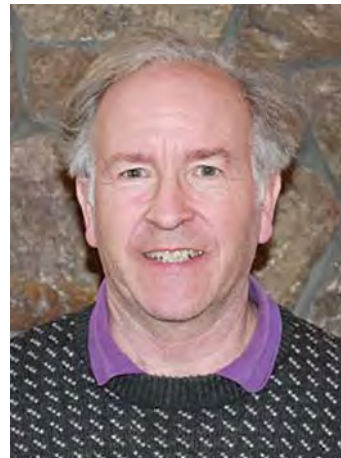
Meet Our New Team Members

Sarah Catanese (aka Cat), Director of Programs & Operations



Climbing many of the major peaks in New England with her family as a young girl, Sarah developed a strong connection to the outdoors. She holds a degree in Recreation Management from Green Mountain College. She spent the next 6 years as the Director of Owner Relations at Steamboat Grand Resort and Conference Center in Colorado. Sarah returned home to her large family and New England roots and has settled in Trenton with her husband Andrew and two children. Sarah came to CBC in February 2014 from Machias Savings Bank where she was the manager for two Ellsworth branches. Sarah has spent the last 18 years supporting creative solution-based strategies for her teams. She and her family enjoy hiking, skiing, going to her family camp, traveling, gardening, and most of all a good adventure!

John Brown (aka JB), Director of Finance



JB spent much of his youth on the slopes of Sugarloaf and later became a canoe guide for youth on the rivers of Maine. He holds a degree from the Wharton School at the University of Pennsylvania and has spent the last 30 years in finance and technology management. Now he is the Director of Finance for two nonprofits on MDI, the Abbe Museum and CBC. JB believes nonprofit accounting deserves to meet the highest of standards and thus honor the public trust. He has spent the last 40 years as an MDI resident and currently lives in Somesville with his wife Emily, a local nurse practitioner. His son is a long time returning CBC camper. In his free time he enjoys gardening, hiking, skiing, boating, and running with 20 finishes of the MDI half marathon!

Our Mission: Through summer camps and year-round outdoor education, leadership and recreation programs, Camp Beech Cliff MDI seeks to enrich the lives of people of all ages. Our mission is to inspire personal growth, interpersonal connection, and a deep appreciation of the natural world.





Be Bold with Us

A Message from our President/Executive Director Debra Deal

I don't normally go around broadcasting what a new project at CBC costs, but adding an \$80,000 high ropes course this year was a big deal! The 40-foot-high challenge course is a physical manifestation of the generosity of our many camp families and friends who raised the necessary funds to build the course and add new and exciting programs to our summer camp and year-round offerings.

I gave a tour to one of our camper's family this summer and when we got to the high ropes course the mom and her son had quite a different reaction in seeing it. Like so many adults who see this for the first time, the mom said: "There is no way you would ever get me up there!" Typically when adults see the course, there is disbelief that anyone would dare to do this voluntarily. "Do you call this fun?" some ask. For many, the idea of swinging from one platform to the next or walking a tightrope while suspended high up simply terrifies them.

Contrast this to the son's reaction: "Whoa!" and "Do we get to do this every day?" Almost every kid wants to go up this course. They aren't afraid of heights — they love taking risks and many are fearless. The high ropes course is another tool that we can use to channel that adventurous spirit into positive risk-taking. Campers are taught all the safety precautions that they need to do activities such as the high ropes course, archery, and boating; and then they are ready to experience the thrill of doing things that many adults would never dream of doing!

In 2012, CBC started following the course set out by a strategic plan that was carefully crafted by the board of directors, staff, and community members. It has given us direction — and all of those goals are being met and some have exceeded all our expectations! With our unprecedented growth both in the summer camp and with the new Acadia Leadership Institute, we are revisiting that plan and exploring next steps. My hope is that we can approach our planning with the same youthful enthusiasm and boldness of our campers so that we can make camp and year-round programs even better.

I am grateful to so many who share our vision for CBC! I welcome your input, and invite you to be bold with us. We are creating fun, thrills, and life changing outdoor experiences for hundreds of kids each summer and extending that mission to people of all ages through our year-round programming. Join us!

Debra Deal



2014 SUMMER CAMP



A Full Circle Moment

A Message from our Camp Director

After an exciting and joyful summer I am left reflecting on the impact that camp has on so many campers, families, young counselors and experienced leaders. It is an honor to witness the physical and emotional growth of those in our camp community — campers and counselors. Camp is a special space with a strong sense of place where people lay roots and feel proud to return to.

One of my goals for 2015 is to create more opportunities for our oldest campers, Quasars, to feel this sense of pride and place with CBC. In addition to reserving special programming for them such as Stand Up Paddle boarding and High Ropes Challenge Course, I want to create a tradition that honors them in their natural position as leaders. Their position of camp elders is valuable because they are the ones the younger campers aspire to be and they are our future mentors and counselors.

Campers all want to be counselors someday — or at least that's the case if we're doing our job right! It's the ultimate honor to witness campers grow year after year, becoming Quasars, Counselors-in-Training, and the powerful full circle moment when they step into the role of counselor. This represents hard work, camp spirit, and the ultimate belonging. Remember, you're never too old for camp (Mike Duffy will tell you that). And once you're part of Camp Beech Cliff, you always have a place here.

Sylvie Riquet



**Thank You for
the Best Season Ever!**

From the 2014 Summer Camp Counselors

The Good Laughs & Great Cheers Continue

Join us in the Eagle's Nest on Sunday, December 28, 4–6 pm for Camp Beech Cliff's Annual Holiday Reunion. Live music, games and a chance to reconnect with your favorite counselors, alumni & camp families. We'll provide the camp fire & s'mores, you bring a dish and a camp memory to share.



Chris Rawls (left), CBC Alumnus and former board member, with the guest of honor Robert W. "Lee" Patterson (right).

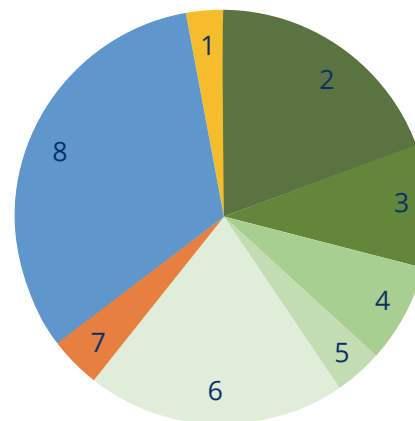
CBC Alumnus Robert "Lee" Patterson

Recognized for Distinguished Service

At Camp Beech Cliff's Summer Soiree Celebration, alumnus and longstanding CBC board member Lee Patterson was publically recognized and officially honored for his distinguished service.

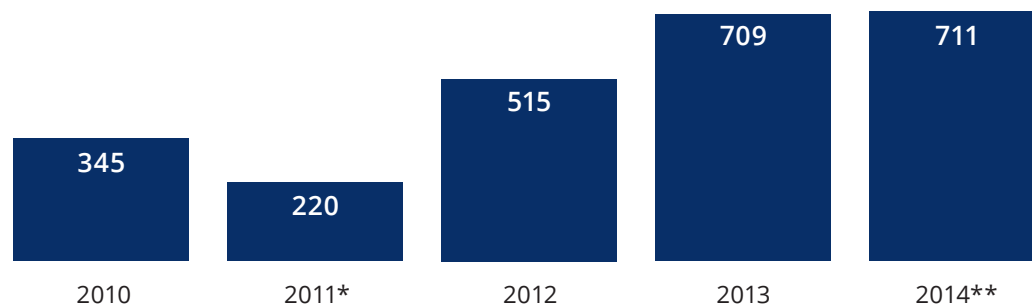
Former Board President Tony McKim spoke to the large gathering about Mr. Patterson's lifelong dedication and commitment to youth and outdoor adventure programming. Mr. Patterson fostered knowledge and appreciation of the natural world in campers through his leadership on the Board of Directors and active participation in nature and orienteering programs. He remains an honorary member of our Board of Directors.

Where Our Campers Come From



1. Out of Country
2. Bar Harbor
3. Mount Desert
4. Southwest Harbor
5. Tremont
6. Other Hancock County
7. Other Maine
8. Out of State

Total Campers Per Summer



Camperships

	2009	2010	2011*	2012	2013	2014**
Recipients	71	60	54	89	96	85
% of Local Kids Receiving Camperships	34%	30%	37%	28%	22%	20%
Amount Awarded	\$35,300	\$36,698	\$30,156	\$56,100	\$59,706	\$50,280

*Camp held off-site during construction.

** Only 8.5 weeks of camp.

The 2014 Specialty Camp Series



1



2



3



4



5



6



7



8



9



10

1. The Big Score! Soccer Camp

2. Pulling Together: Dog Sledding Into Summer

3. Outside Art: The Way of the Wabanaki

4. Outside Art: In-The-Sun-Spriations!

5. Ready Your Engines: The Race is On!

6. Playing Shakespeare: From Page to Stage

7. Jr. Firefighter Academy

8. Bird's Eye View: Climbing Acadia's Peaks

9. Feel the Rhythm, Feel the Rhyme:
It's Drumming Time

10. Culinary Arts Mystery Basket

Rock on MDI, see cover; Junior Maine Guide, Self-Defense for Girls, and Circus specialty camps featured on following pages.



Junior Maine Guide Specialty Campers Explore the Woods and Waters of Acadia

This summer registered Maine Guide, Mike Guarino, led seven Junior Maine Guide (JMG) specialty camps where campers explored the woods and waters of wild Acadia. Our JMG campers experienced a comprehensive outdoor curriculum, developed in cooperation with Maine Summer Camps and Maine Department of Inland Fisheries and Wildlife and exclusively sponsored by Machias Savings Bank, that can be used toward their Junior Maine Guide certification.

Junior Maine Guide Instructor, Mike Guarino, with JMG campers.



Girls Self-Defense

This was the second season Karate instructor and master black belt of the 7th degree, Mike McEnroe, otherwise known as Sensei Mike, volunteered Girls and young women in grades 4-10 learned to build physical and emotional strength with the help of co-instructors Milja Brecher DeMuro, LCSW and Tara McKernan.

Their work addressing barriers to self-confidence and self-defense — was a perfect combination to help our female campers, trust their instincts, be prepared physically and emotionally, and have a strong voice in a variety of settings.

Volunteer Mike McEnroe gives generously of both his time and talents instructing the girls self-defense specialty camps.



The Greatest Show On... The Island

In August, 27 Circus specialty campers and professional circus performers from New York's CirqOvation gave separate capstone performances. In the afternoon, campers gave spectators an amazing show that included plate spinning, juggling, silk aerials, body stunts, and devil sticks. These may not seem like traditional summer camp activities, but like other camp programs it's hands-on adventure that connects kids with newfound interests and lasting friendships. Campers dedicated hours of diligent attention exercising their balance, honing hand-eye coordination and dexterity, as well as practicing their ability to laugh at themselves. Learning new skills and performing them at the end of the week takes real guts, and all the hard work paid off as campers entertained and amazed the large audience with their confidence and talent.

Circus camp came to a spectacular close with an evening carnival and performances by CirqOvation's Joshua Superstar and Sora Sol. The community was invited to the transformed CBC campus to enjoy music, food booths, balloon animals, face painting, and wandering performers before the greatest show on the island — where Josh and Sora mesmerized the large crowd. The Circus Camp and community event, exclusively sponsored by The First, will return next summer. We hope to see you at the Circus!



From a Parent's Perspective

by Meg Harris

It was my first experience at truly letting go of Eliza, my 9-year-old daughter with atypical Rett syndrome. Eliza has been in the school system now for five years, but sending her to a day camp for three weeks was different. No one at Camp Beech Cliff knew her and her one-to-one aid had only met her on a few occasions. I was afraid but willing to take the step. I sent her to the camp with the hope that she would flourish and thrive and learn and grow and they did not disappoint. The camp directors, counselors, aids and other campers held her in their care for three weeks and the transformation was incredible to see.

Day one arrived and there was intense hesitancy on my part to walk back up those stone steps, away from Eliza, to my car. The tears came quickly. Tears of fear and of hope. I watched the clock all day. I waited by the phone in case something happened. The call never came. I was promptly at parent pick up at 3:45 and there she was: happy, tired, safe and ready to return the next day.

That first week, I went to family day. It was a wonderful opportunity for me to see Eliza in action. I saw that she was happy and enjoying herself but there was still a disconnect. She seemed to be existing in the program with the help of her aid, but only from the outside.

The kids were hesitant and kept their distance and the counselors were unsure of how to involve her.

I asked her aid to take a step back the next week and invite some of the other campers to be Eliza's partner in activities. In week two, when I dropped her off in the mornings, some of the kids spoke to her and a few of the counselors gave her high fives and hugs. I was starting to feel much better about her overall experience.

During the third week, magic happened. I received daily reports and pictures of Eliza that were incredible. She had a steady group of swimming partners and she was playing independently from her aid. She was able to climb the ladder to the dock with no help at all which is something she could not do in week one. Eliza had other campers asking her what she would be choosing for afternoon choice so they could be with her and she began to protest the constant help from her aid by saying, "By myself."

The final day at camp I was stunned by Eliza's transformation. We walked in together that morning when I brought her to the camp gathering. The counselors stopped us and greeted her warmly by name and other campers came up to her to say good

morning. As her aid and I stood talking about the last day ahead, Eliza made her way down the stone steps by herself and joined the other campers circled around the counselors, singing their very last camp songs of the summer. She joined right in with the group and I watched as she laughed, sang, jumped and yelled with the others. It was such an amazing moment for me to witness. This was the little girl that the doctors said would never walk or talk, and there she was among

"The final day at camp I was stunned by Eliza's transformation."

her peers, having this incredible experience.

When I left the camp for the last time, I cried even harder, but the tears were of joy, relief and a profound sense of gratitude to the camp, the counselors and her aid for giving Eliza the opportunity to grow and learn and to have this very "typical" summer experience. Eliza and I are already talking about what she'll do next summer when she returns.

Follow Meg Harris on Twitter:
www.twitter.com/specialglobe







ACADIA LEADERSHIP INSTITUTE

Your Next Great
Adventure Awaits!

State-of-the-art facilities
and 50 acres at
Camp Beech Cliff
on Mount Desert Island, Maine

Customize your university,
school, business or group
adventure today!

Canoe & Kayak Trips

High & Low Ropes Course

Climbing & Hiking

Trainings & Certifications

Leadership & Team Building

Nature & Discovery

Adventure Excursions in
Acadia National Park

207.244-0365
www.campbeechcliff.org



**Climb to New Heights
and Soar Beyond with
Camp Beech Cliff's Acadia
Leadership Institute!**

In August we announced the establishment of Acadia Leadership Institute to bring the camp experience to a broader audience and provide year-round outdoor education and recreation programs.

What our participants are saying:

"Reflective and inspiring. With the set of team activities I was able to understand a greater meaning and relevance to other factors and experiences in my life. Experiential education at its finest."

College of the Atlantic Student

"It was great, I came nervous and not excited but it was actually one of the best experiences of my life."

Carroll School, MA, 9th grade student

Discover, Connect, and Aim Higher Than You Thought Possible!

Our teambuilding and leadership programs provide various levels of challenge and inspiration. Individual and group success is achieved through peer support, encouragement and team work, not solely on physical strength. Our challenge by choice activities are sequenced to gradually increase participants' self-confidence and communication skills and prepares them for each new challenge. At the end of the experience they process how they can apply these new skills to help them achieve their individual personal goals. Take a look at what our participants are saying...

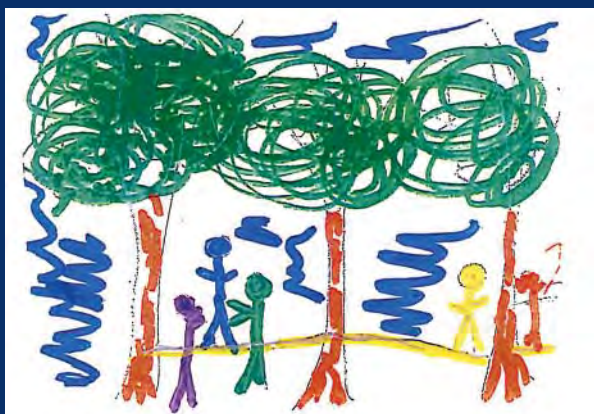
After a one-day team-building program, Pemetic 5th grade students shared their experience with the staff:



"...One minute later we were all cheering and giving each other high fives I think everoyone was surprised and happy because I was." Evan



"...We didn't win, but inside we had." Ella



"...After we did the ropes course, I felt a huge sense of success. It was very satiffying. It really built my sense of teamwork up." Quinten

We had so much fun at CBC this week.
We really liked the ropes course and
the night walk, Thank you for the
fun time we all had, I hope we
can come back again! you really
helped us build up our trust,
Thanks Agian!

MDES 6th Grade Teambuilding

Mount Desert Elementary School students bounded off of the school bus at Camp Beech Cliff for a two-day overnight team-building and leadership program this October. Instructors led the twenty-three 6th graders through ice breakers, problem-solving initiatives, and the low ropes challenge course. At the end of the day a teacher remarked that a student who was usually reserved and distanced herself from the group was being goofy and swept up in the mix during a pre-dinner soccer game. Day one had been a success!

The two-day program included a night hike, campfire and s'mores, and an early morning polar plunge into Echo Lake, and the students reported that the highlight was the high rope challenge course. "We all felt energized and eager to try more — to reach beyond our personal limits in whatever ways we could. It was exhilarating and motivating!" shared a teacher grateful for the experience that would carry her students throughout the school year as a stronger team.

OUR GRATITUDE

Camp Beech Cliff gratefully acknowledges the following individual and business donors who gave during the period of October 1, 2013 to September 30, 2014. Your contributions keep tuition affordable, provide camperships and free transportation, and help us deliver a quality summer camp experience that enriches, inspires and connects youth to their best selves, nature and each other. (We make every effort to ensure that this list is accurate and complete and apologize for any errors or omissions. Please let us know of any oversight.)

Anonymous (6)
Gary & Birgitt Adams
The Aikman Family on Echo Lake
Abigail & Geoffrey Ames
Linda Ames
Stephen & Christie Anastasia
The Anderson Family
John & Elizabeth Angelbeck
Diana Ansley
Bud & Heather Applegate
Jon Zeitler & Cynthia Baker
In Memory of Christina L Baker
Mary Barter
Duane & Robin Bartlett
Gillian Beamer & Orin Parvin
Ron Beard
Lesley & Robert Bechtold
Julie & Allen Benello
Lucy Benjamin & Clifton Page
Peggy Bergen
R Berndt
Paulette Bilsky
Susan Thomas Blaisdell
Cindy & Steve Bohner
Bernie & Bonnie Boisvert
Michael Boland & Deirdre Swords
Kristi & Jeremy Bond
Ernest & Carol Bouchard
Blair & Josh Bourne
Sharon & Bruce Bradley
Madeleine and Bob Braun
Ellen Brawley
Anthony DeMuro & Milia Brecher-DeMuro
Judy Britt & Claudia Basso
Charles Brown & Frederick Brown III

John & Emily Brown
Laura L Brown
Nancy J Brown
Becky Brush
William & Ellie Buchanan
Elly Burnham
David & Crystal Butler
In Memory of Gabe McFarland
Charles Butt
Blue & Kevin Butterfield
Peter & Ruth Calas
Claire & Chip Calcagni
Mark & Barbara Campbell
Ann & Marc Cannon
Michael R Cannon
Alan Keene & Trisha Cantwell
Dano & Rebecca Carbone
Sherri & Mark Carignan
Katie Carter
James Cartwright
John & Stephanie Cartwright
In Memory of Pam Fountain
Gail Caruso
Sarah & Andrew Catanese
In Memory of Barbara F March
Gary & Katherine Churchill
Sonia Churchman
Tanny Clark
Robert Clark & Lisa Horsch Clark
Sarah L Clark
Don Coates
Jan Coates
Tristram & Ruth Colket
Howard & Nancy Colter
Michael & Lyn Cook
Phil & Kelly Corson

Brian Cote & Kelly Beaulieu
Stephen & Ann Cough
Richard Cough & Heidi Wittwer
Anna Cousins & Leo Kobayashi
Cassandra & Robert Cox
Owen & Kim Craighead
Heidi L Crock
Pepper & Dave Cwik
Erin & Jesse Dahl
Dede & Dan Daigle
Stuart & Mary Davidson
Matthew & Heather Davis
Wayne Davis
Jon & Nancy Dawson
Debra Deal & Rogier van Bakel
Tom & Anna Belle Deal
David & Jean Dean
Peter C Dekker & Marilyn S Sperling
Mrs Margaret M Delehanty
Steve DePaul & Beth Rendeiro & Rosy DePaul
Jayshri & Nikhil Desai
Robert Desimone
Deborah L DeWalt
Doug & Pam Diehl
Tom Diehl & Brenna Flaughner
In Memory of Coneye Jellison
Arthur & Marjorie Dole
Susan Dombroski
Lynne & Brian Dominy
Maria & Ryan Donahue
Meredith Donovan
Kerri & Rod Dowdell
Jennifer & Nick Dowling
Mr & Mrs Ford B Draper, Jr
Mike Duffy

Walter Dunton
Deborah Dyer
Jenn Dyer & Nathan Burke
James T Dyke & Helen L Porter
Ann Eagan
Peter Earl
William & Judith Eason
Larry & Meg Eaton
Shirley Eaton
The Rev Katharine C Evans
Ken & Mary Evans
Laura & Michael Farkas
David Faust
Jean & Robert Fernald
Lauri Fernald
Tom & Carroll Fernald
Peter & Jackie Finger
Marc Fink
Redmond Finney
Susanna Fischer & Erik Mueller
Anthony & Ann Fisher
Jacqueline & John Fitzpatrick
Susan B Flach
Rebeca & James Ford
Gary Fountain
Heather Fowler
Jordan & Baylor Fox-Kemper
Sarah Fraley
Skip & Sara Fraley
Geoffrey S Fraser & Starie L Seay
The Froehlich Family
Fuller Family
Sylvia Depedroso Gage
Teresa García & Patricio Cifuentes
Heather Garnett
Anne T Gartner

* indicates deceased

John Avila & Lyn Gatz
Line Giasson & Daniel Labillois
Marsha Gill & David Gallitano
Cooper & Deborah Glenn
Dorothy Goett
Franklin A Goodwin
Elizabeth Gordon
Robert & Judith Burger-Gossart
Caroline Goulden
Bruno & Joann Graizzaro
Rene Grant
Donald & Margot Graves
Sheila Greene
David & Rennie Greenfield
Jeff Grey & Linda Gregory
Leigh Schmidt & Marie Griffith
Dan & Ta Grimley
Ann Grinnell & Jesse Cameron
Polly Guth
Suzanne Haaland
Lynn Haaland & Michael Kohler
Mr & Mrs Richard Habermann
Elizabeth Halpern
Rosamond Hamlin
Peter & Elizabeth Hansen
Penelope P Harris
Danielle & Christian Hartley
Hattie A & Fred C Lynam Fund
Julie Havener & John Ho
John and Jocelyn Hayes
Susan Pope Hays
Katherine Hazard
Leslie & Ann P Heilakka
Heimbold Foundation
Anne Heisey
Kirsten & Stephen Henry
Pat Herlihy & Kathi Abba
Betsy Hewlett
David Hill & Monica McAndrews-Hill
Hope & Peter Hill
Ingrid & Ken Hill
Melissa Pearsall & Scott Hirsch
Nancy Ho
Thomas & Susan Hodge

William & Susan Hodgkins
Naomi & Michael Hoffman
Betsey Holtzmann
Stephen & Nancy Homer
Sally Hopkins
Daisy Hougan
Sara & Matt Hougan
Grenville & William Hudson
Lisa Ireland & Josh Ehrlich
John Izenour & Huyen Tran
Arthur & Kate Jacobs
Marcy & Josh Jacobs
Robert James & Vilmarie Rodil-James
Ailing & Colin Jeavons
Jane Jenkins
Allison & Edward Johnson IV
Mildred Johnson
Mr & Mrs Hugh Johnston
Keith Johnston & Angi King Johnston
Susannah Jones
Carol Jordan
Finn L Jordan
Frank & Grace Jordan
Lee & Ann Judd
Dr Robert Jung & Suzanne Fountain
In Memory of Pam Fountain
Katrina & Patrick Kane
Aija Kante & Frederick Cahn
Steven & Ali Kassels
Leon & Gail Amalia B Katz
Kimberly Kauffman & George Payne
Tim & Kim Kearns
Chris Keegan & Jennifer Litteral
In Honor of Mike & Lynne
Christopher & Kimberly Keene
Steve Keiser & Karen Perry
James & Sally Anne Kellogg
John & Heather Kelly
Ursula Kelly & Eileen McGee
Victor & Ellie Kelmenson
Lynn King & Wayne Merchant
Ellie Kleinman & Mark Zaid
Christina Baker Kline
In Memory of Christina L Baker

William & Deborah Knowlton
Philip & Helen Koch
Vesta Kowalski
Ann & Donald Kraftson
Mark & Sandra Kryder
The Lambert Family
Mrs Ilse Lamerhirt
In Memory of Henry
Christina & Derek Lapointe
Heidi & Adam Lawson
Evan Lee & Myriam Lee-Pineau
Christine Lennon & Andrew Reich
Rosalind Lewis
Chenbei Li
Philip Lichtenstein & Jessie Greenbaum
Dennis Lin & Linh Tran
Zhong Wei Zhang & Hong Liu
Richard Loutzenheiser & Lorraine Edwards
John Stanley Lowe
Travis Lunt & Family
Claudine & L Kirk Lurvey
Marty Lyons
Amy Lytle & Steve Bird
Dianne Lytle
John Macauley
Laura MacDonald
Mrs Constance B Madeira
Joan Madore
PJ Mallinckrodt
Ann Sari Malmquist
John & Maude March
George & Paula Marcus
David and Michele Marks
Antonio Planchart & Carolyn Mattingly
Marilyn Mays
Michelle & Andrew Mays
Mary McCall
James & Joyce McFarland
In Memory of Gabe McFarland
Karen & Bill McFarland
In Memory of Gabe McFarland
Jim & Anne McKenna
Mitchell & Jan McMillen

Estelle M Megquier
Carl & Carol Melzer
Laura Merrill
Mr & Mrs John L Merrill, III
In Memory of Pam Fountain
Vince & Debby Messer
Stephen Michaels
Eileen & Ethan Miller
Rameen & Diana Molavi
Jacqueline Montfort
Austria Morehouse
Matt & Debbie Morehouse
Joshua & Kathleen Morgan
Heather Morrison & Nathan Rapp
Esther Mun
Chris & Heidi Murphy
Shawn & Jill Murphy
Amanda & David Murrell
The Nabama Foundation
Douglas & Edith Naegele
Josh & Susan Nan
Tabbetha Newenham
Sue Newman
Juergen Naggert & Patsy Nishina
Lynn & Jim Nobil
Chester & Ulla Norris
Eric Murch & Sonja Norwood
Peter & Judith* Obbard
Ted & Julie Obbard
Cynthia Ocel
Vance O'Donnell
Ken Olson
Sarah O'Neil & Derek Wilbur
Rodney & Ardis Kuniyoshi Ono
John & Lynn Orav
Melissa & Peter Ossanna
Florenz & Nan Ourismann
Anya & Nathan Owen
Ken & Bev Paigen
The Puffin Fund of the Maine
Community Foundation
Eric Pakula & Mollie Mcquarrie
Joe Mackay & Alan Parks
Carolyn & David Parks

*Gifts given in loving memory of
founding board member
Ken Cochrane who was an
integral member of the
Camp Beech Cliff community.*

C H & Christine Breedlove
Galina Espinoza
Lance & Anne Funderburk
Rosalind Lewis
Stan & Binnie MacDonald
Mr and Mrs Raymond Rappaport
Michael & Leslie Rindler
Harry & Lucy Triplett
Joseph & Cassandra Wright

Giovanni Parmigiani
Johanna Pasha
William & Sydney Patten
Gerda Paumgarten
Clay Pearson
Carol Pendergrass
Janet & Daniel Pereira
Michelle Perkins & Mark Wanner
Polly Pierce
Alton Pinkham
Graciela Pinotti & Andres Cieri
Stephen & Donna Pinto
Sylvie Piquet & Owen Humphrey
Dani Piquette-Kelly & Bill Kelly
Jason & Tammy Pirie
Will Pitts & Catherine Baker-Pitts
Cathy Planchart
Marsha Planting
Carole Plenty
Anne, Bruce, Kate & Liz Pomeroy
John Pomfret & Mei Zhang
Kenneth & Alexis Poss
Judith G Pott
June & John Pratt

Jim Progin & Judy Holmes
Mrs Clifford Pulis
Faith Pulis
Jonathan D Rall
In Memory of David and Edith Rall
Andrew Ray
Dean & Penny Read
Matthew & Bethany Reece
Stephanie & Mark Reece
Carolyn & Jeremy Rees
Diana & Roland Reynolds
Elizabeth Reynolds & Max Senter
Kristine & Dean Rich
Darren & Cindy Richardson
Erin & Kirk Ritter
Shawn Wignall & Alison Rivers
Rowland & Deb Robinson
Sydney Roberts Rockefeller
Elizabeth Rosenberg & Peter May
Miss Anna Ryan
Bill & Pamela Ryckman
Ken & Sid Salvatore
Elizabeth & Alex Salvi
Edward L & Martie Samek
John Sanders & Chris Costello
Cheri & Andrew Sankey
Amy & Michael Santullo
Penny Saunders
Jim Scarborough
Deborah & John Schafer
Mario & Lena Schiffer
Henry Schmelzer & Cynthia Livingston
Kent & Cyndi Schmidt
Lari Schwartz
Jay & Alicia Scribner
Kristen & Everette Seay
Cristina Seckinger & Ian Watson
Robert & Lyta Seddig
Christy Seed & Stephen Ruda
Patti & Jerry Selig
Peter & Lucy Bell Sellers
Kathy Shaw
Michelle Shea
Kathleen Shields

Patricia & Laurence Silberman
Julie & Alex Chavarot
Anna & Bart Smith
Cynthia Smith & James Yeadon
Meg Samek-Smith & H-J Smith
Midge Hinckley Smith
Ed Snyder
Sara Somes
Stephen & Brenda Sprague
Emily & Scott Springer
Victor Stanley
Sheridan & Barb Steele
Cyndi & Chris Stein
Alex & Heather Stephens
William Stewart
Betsy Stires
Doug & Kim Storey
Emily Strainchamps & Michael Berger
Robin & Richard Strauss
Curt J & Ann H Strohacker
Gretchen K Strong
Allison & Stephen Sullens
Wyman & Robin Sue Tapley
Ann & Talbot Taylor
Dianna Taylor
Timothy & Jean Taylor
Tempe Graves Spirit Trust
Herb & Sari Thomas
Tamara & Tim Thomas
Jenel Thurlow & Todd Goodell
John & Mary Treanor
Tom & Betsy Uhlman
Anthony Uliano & Chelcey Dunham
Juliet & Luke Van Alen
Paul & Robin Vermynen
Susan & Harry Vinall
Howard & Paula Vogel
William R & Marilyn S Voorhies
Stephanie Waite & Craig Blethen
Ann Waldron
Jen & Adam Wales
In Honor of Eli & Sasha
Bing Wang
Mary Webster

Jim Weeks & Katharine Meyer
Kenneth & Carol Weg
Tristan & Ella Weinkle
Heidi Welch & Patricia Tierney
Nancy Wilder
Rhys & Rebecca Williams
Theodore Williams
Jon Wilson
Marilyn & Jerry Winkelstein
Gordon & Lisa Wissinger
Mr & Mrs James W Wood, Jr
Rebecca Woods
Kate & Garric Worcester
Jennifer & Donald Worden
Joseph & Cassandra Wright
Chuck & Ruth Yeiser
David & Anne Zaslaw
In Honor of DiMauro Triplets of Bar Harbor
Carol Zdziarsli
In Memory of Gabe McFarland

BUSINESSES

2 Cats Restaurant
365 Degree Bakery
A & B Naturals
A Little Mad Island Shop & Gallery
AC Parsons Landscaping &
Garden Center
Acadia Natural Health
Acadia Veterinary Hospital
Acadia Woods Kennel
The Alchemist Salon
Allied Whale, College of the Atlantic
Asticou Inn
The Bangkok Restaurant
Bar Harbor Brewing Company
Bar Harbor Catering Company
Bar Harbor Inn & Spa
Bar Harbor Lobster Bakes
Bar Harbor Tea Company
Bar Harbor Whale Watch Co
Ben & Bill's Chocolate Emporium
Black Friar Inn
Blue Butterfield Studio

Brown Family Farm
 The Bud Connection
 Cadillac Mountain Sports
 Cranberry Hill Inn
 Carisa's Hair & Nail Salon
 Carroll Drug Store
 The Causeway Club
 Chalmers Insurance
 Christmas Spirit Shop
 Clair de Loon
 Claremont Hotel
 Classic Boat Shop
 Colonel's Restaurant & Bakery
 Dobbs Productions
 Dowsland Photography
 Eager Eye Photography
 EBS Building Supply
 Eden Spa at the Bluenose Inn
 E L Shea
 The Ellsworth American
 Ellsworth Chainsaw Sales & Service
 Fathom Restaurant
 Fiddlers' Green
 Finn's Irish Public House
 Fiore Artisan Olive Oils & Vinegars
 The First
 Fish House Grill
 Fleurishes by Barbaralyn Walen
 Gallery Leather
 Galyn's Restaurant
 Geddy's
 Gott's Store
 Greenway Equipment Sales
 Grumpy's
 Gull Rock Pottery
 Hairworks by Kim
 Hannaford, Bar Harbor
 Hatched on MDI
 Havana Restaurant
 Horton, McFarland & Veysey, CPA
 House Wine
 In The Woods

Island Bike Rental
 Islandspring
 Islesford Dock
 Islesford Pottery
 J & P's Farm Market
 Jordan Fernald Funeral Home
 Jordan Pond House
 K & K Detailing
 Katahdin Photo Gallery
 Kawasaki Motors
 Corporation USA
 Kebo Valley Golf Club
 The Kimball Shop
 The Knowles Company
 Real Estate
 Lawrence Enterprises
 Lisa Hall Jewelry
 Little Notch Bakery
 Lucy's Granola
 Machias Savings Bank
 Maine Boats, Homes and Harbors
 McEachern & Hutchins
 McKay's Public House
 MDI Real Estate
 Michael C Farkas, Esq, PLLC
 Milagro Coffee & Espresso
 Monica Davis Jewlery
 Morton's Moo
 Mount Desert Camp Ground
 Mount Desert Elementary School
 Mount Desert Islander
 NAPA Auto Parts
 The Natural History Center
 The Naturalist's Notebook
 Nelson F Goodwin Company
 Northeast Harbor Golf Club
 Northeast Plumbing & Heating, Inc
 Past Treasures & Christine's Gallery
 Pat's Pizza
 Pizazz
 Queen Anne's Flower Shop

Quietside Café and Ice Cream Shop
 Quimby House Inn & Spa
 Re/Max Hills & Harbors Realty
 Red Sky Restaurant
 Redfield Artisans Gallery
 Reel Pizza
 Richard Parks Furniture
 Rooster Brother
 Route 66 Restaurant
 Sagegrass Gallery
 Quietside Cruises
 Sailor & Hook
 Salsbury Organic Garden Supply
 Salt Air Inn
 Sargasso Salon
 Savage Forest Enterprise
 Sawyer's Market
 Sawyer's Specialties
 Sea of Cotton
 Seal Cove Pottery
 Shaw Jewelry
 Sherman's Bookstore, Bar Harbor
 Shinbashi Restaurant
 Siam Orchid Thai Restaurant
 Side Street Café
 Sips
 Skip's Automotive Services
 Snowman Printing
 Southwest Cycle
 Southwest Video
 Spruce & Gussy
 Mary Aline, LTD
 Stanley Subaru
 Steppin' Up, Inc.
 Thurston's Lobster Pound
 Town Hill Market
 West Street Cafe
 Westside Florist
 Wild Acadia Aerial Park
 Wild Acadia Fun Park
 Williams Irrigation Systems
 Winter's Work



Sculpture at Camp is a Natural Fit

Recumbent Form (Elephant), a fabulous two-ton bluestone sculpture by artist Hugh Lassen became a perfect addition to our campus. It was installed this spring as the result of a collaborative effort between CBC, the artist, and Art In Public Spaces (AIPS) whose mission is to create opportunities for Maine artists to exhibit their work throughout the community.

Our art programs are inspired by, created in, and often made from objects found in nature; therefore, it seems only natural that our campers should experience fine art exhibited in nature. We are especially grateful to Hugh for sharing this work so the children, families, and communities we serve can enjoy art as an integral part of their camp experience. Viewers touch, climb, and rest upon the work as the artist had envisioned when he chose our site. For inquires to purchase this or other works by Hugh, visit www.hughlassen.com.



Loonch Ladies Support Camp in High Fashion

One hundred women gathered at the Claremont Hotel in early July to celebrate the beginning of the summer social season by attending the sold-out 7th annual "Ladies Who Loonch." Proceeds from the luncheon and fashion show by The Kimball Shop & Boutique and Hatched on MDI help local kids attend camp through needs-based scholarships. A record \$22,000 was raised at this event. "Families who would otherwise be unable to send their children to camp are deeply appreciative of the generosity shown by women who attend this annual luncheon," explained Committee Chair, Elizabeth Angelbeck.

We express our deepest appreciation to our fabulous Loonch Committee led by Liz Angelbeck and Paula Vogel; our sponsors Eden Spa at the Bluenose Inn, Fiore Artisan Olive Oils and Vinegars, ERA Dawson Bradford Co.; the many businesses and artists who donated incredible auction & basket items; and most especially our spectacular Loonch Ladies and Patrons whose attendance and loyal support gives the gift of camp to a local child.



The 2015 Ladies Who Loonch will be held at the Asticou Inn in Northeast Harbor to accommodate the number of ladies who want to attend. Business and individual sponsorships are already being sought for the popular July 13, 2015 event.

If you're interested in being a sponsor, please contact michele@campbeechcliff.org.



Top: The 2014 Ladies Who Loonch Committee (Lt to Rt): Aly Cram, Debra Deal, Marie Griffith, Ali Kassels, Paula Vogel, Liz Angelbeck, Suzanne Haaland, Anne Pomeroy, Judy Eason, Nancy Brown, Michele Marks. Not shown: Judy Holmes, Marsha Gill, Sally Kellogg & Sheila Greene

Center: Loonch Patrons Mary McCall, Meg Morton & Betsy Uhlman

Bottom left: Anne Pomeroy, one of the founders of the Ladies Who Loonch event which has raised over \$60,000 in camperships since its inception, was presented with this year's Pink Rose Award for her longtime support of Camp Beech Cliff.

Bottom right: Loonch Ladies Dorothy Feeley and Peggy Bergen

Recreation for All Ages at CBC!

(Go to campbeechcliff.org for a full calendar, program fees, and to register.)

Community Programs: Session One — 8 Weeks (Nov 1-Dec 20)

Basic Archery (Ages 6–15, registration required)	Saturdays	9:30–11 am
Indoor Rock Climbing	Begins November 3	5:30–8 pm
Rock Stars (Adult climbing, 15+)	Mondays	5:30–8 pm
Women Who Rock (Ladies only, 15+)	Wednesdays	5:30–8 pm
Wall Nuts (Family friendly climbing)	Fridays	5:30–8 pm
Indoor Volleyball, <i>full teams and individuals welcome!</i> (Intermural League. 15+, registration required)	Tuesdays	5:30–8 pm
Mindfulness Retreat	May 17, 2015	10 am–3 pm

Vacation Camps

New! Holiday Camp (Grades 1–6, registration required)	December 29–31	9 am–4 pm
Winter Vacation Camp (Grades K–6, registration required)	February 16–20	
Spring Vacation Camp (Grades K–6, registration required)	April 20–24	

Summer Vacation Camp	Registration opens March 16, 2015	
-----------------------------	--	--

Events

Bids for Kids! Online Holiday Auction	Nov 19–Dec 7	
Holiday Reunion: Alumni & Camper Family Potluck	Sunday, December 28	4–6 pm
Spring Action Volunteer Day	Saturday, May 30	9 am–1 pm

Trainings & Certifications

Family Orienteering Workshop	Sunday, February 8, 2015	12–4 pm
Adventure Curriculum for Physical Education	Thur, Mar 5–Fri, Mar 6	8 am–5 pm
Achieving Fitness	Sat, Mar 7–Sun, Mar 8	8 am–5 pm
Wilderness First Responder	Mon, May 11–Tues, May 19	8 am–5 pm
Mindfulness Retreat (Adults)	Sunday, May 17	10 am–3 pm
Adventure in Business	Thur, May 21–Fri, May 22	8 am–5 pm
Wilderness First Aid	Sat, May 23–Sun, May 24	8 am–5 pm

CALENDAR



Help Wanted

Accepting Qualified Applicants by January for the 2015 summer season! Do you know someone who is 16 or older who has strong communication skills, an aptitude for creativity in the outdoors and a love of children?

Contact sylvie@campbeechcliff.org.

Be a Camper All Year Long!

Follow us on Facebook for summer camp photos, program announcements, random musings and interesting articles about the benefits of outdoor education, play and camp magic!





Camp Beech Cliff
PO Box 381, 264 Beech Hill Road
Mount Desert, ME 04660-0381



JUST IN TIME FOR THE HOLIDAY GIFT GIVING SEASON!

November 19-December 7, 2014

Camp Beech Cliff's BIDS FOR KIDS! Online Auction

Give the Perfect Gift and Make a Difference in the Lives of Children!

Your bids support the programs of Camp Beech Cliff and the children and families we serve.

A sample of featured items includes:

Fine Dining	Handmade Jewelry	Custom MDI Adventures
Gift Certificates	Spa Treatments	Guided Nature Tours
Children's Items	Holiday High Tea	An Exquisite Classic 1963 Old Town Wood Canoe
Luxury Lodging Packages	Fine Art	

To see all of our auction items and register to bid, go to:

WWW.BIDDINGFORGOOD.COM/CAMPBEECHCLIFF

Sponsored by



All Star Graphics

Bangor Savings Bank

Darlings Auto Mall